

APPENDIX H

Application of the Telemetry Attributes Transfer Standard

1.0	Elements of the Telemetry Attributes Transfer Process	H-1
1.1	Data Entry System	H-1
1.2	Source Database.....	H-1
1.3	Export Program.....	H-1
1.4	Interchange Medium	H-1
1.5	Import Program.....	H-1
1.6	Destination Database	H-2
1.7	Telemetry Setup System	H-2
1.8	Telemetry Processing Equipment	H-2

List of Figures

Figure H-1.	Typical Elements of the Telemetry Attributes Transfer Process	H-3
-------------	---	-----

This page intentionally left blank.

APPENDIX H

Application of the Telemetry Attributes Transfer Standard

1.0 Elements of the Telemetry Attributes Transfer Process

Interchange of telemetry attributes occurs between vehicle instrumentation organizations (the source) and the telemetry ground stations (the destination). Interchange may also take place between ranges. The following are typical elements of this process:

- a. Data entry system
- b. Source database
- c. Export program
- d. Interchange medium [this standard]
- e. Import program
- f. Destination database
- g. Telemetry setup system
- h. Telemetry processing equipment.

These elements are depicted in [Figure H-1](#) and are defined as follows.

1.1 Data Entry System

The data entry system is the source organization's human interface where telemetry attributes are entered into a computer-based system (not affected by this standard).

1.2 Source Database

The source database is where telemetry attributes are maintained in a form appropriate to the local organization's needs (not affected by this standard).

1.3 Export Program

The export program converts the telemetry attributes from the source database format to the format defined by this standard and stores them on the interchange medium.

1.4 Interchange Medium

The interchange medium contains the telemetry attributes being transferred from the source organization to the destination organization. Format and contents are defined by this standard.

1.5 Import Program

The import program reads the standardized interchange medium and converts the attributes to the destination database format in accordance with local needs, system characteristics, and limitations.

1.6 Destination Database

The destination database is where telemetry attributes are maintained in a form suitable to the local ground station's needs (not affected by this standard).

1.7 Telemetry Setup System

The telemetry setup system accesses the destination database to load the telemetry processing equipment (not affected by this standard).

1.8 Telemetry Processing Equipment

The telemetry processing equipment is where the attributes will ultimately be used to properly handle the data being transmitted (not affected by this standard).

The interchange medium is intended as a standard means of information exchange. The source and destination organizations are not constrained by this standard as to how the attributes are stored, viewed, used, or maintained.

To use the attribute transfer standard, import and export software must be developed. Once in place, these programs should eliminate the need for test item or project-specific software at either the supplying (source) organizations or the processing (destination) organizations.

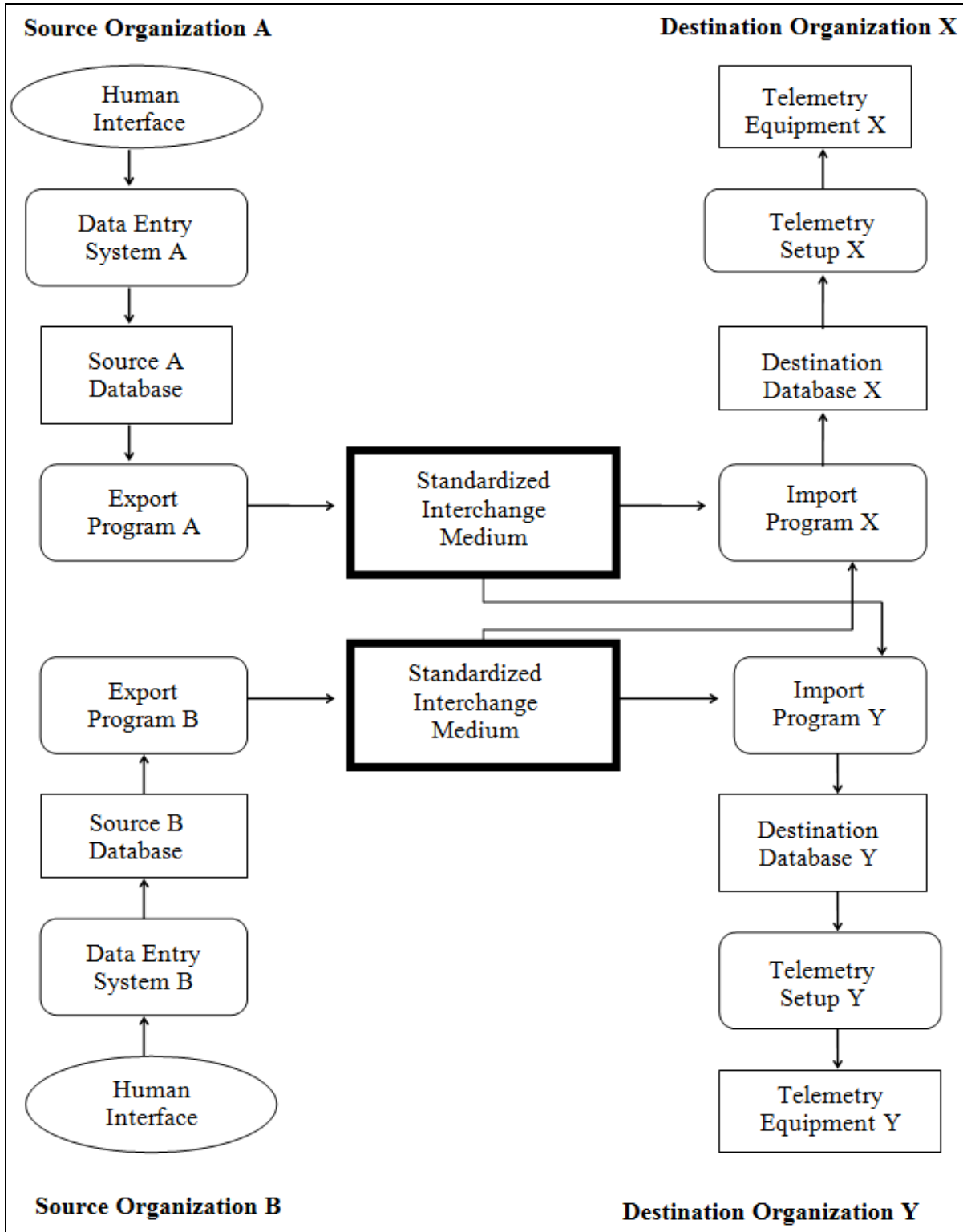


Figure H-1. Typical Elements of the Telemetry Attributes Transfer Process

***** END OF APPENDIX H *****